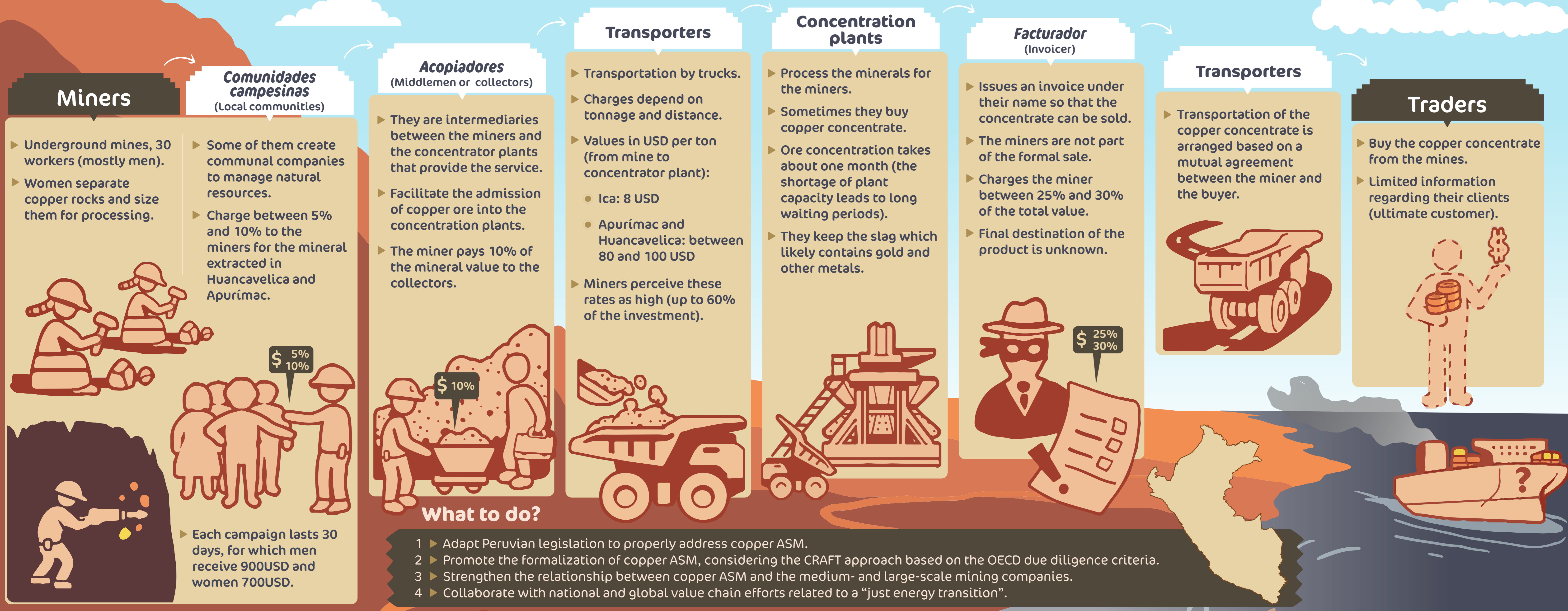
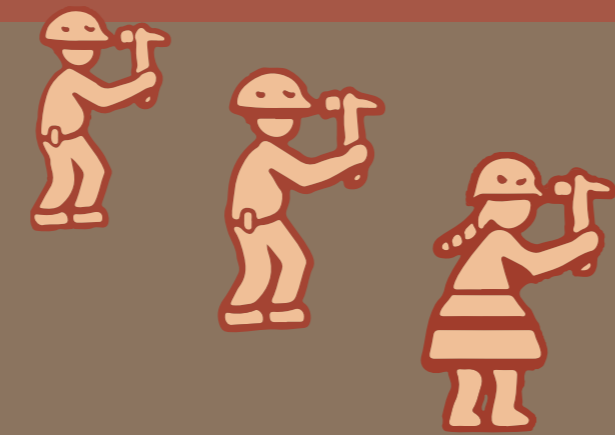


Artisanal and Small-Scale Mining (ASM) of Copper in Southern Peru (Apuurímac, Huancavelica and Ica)

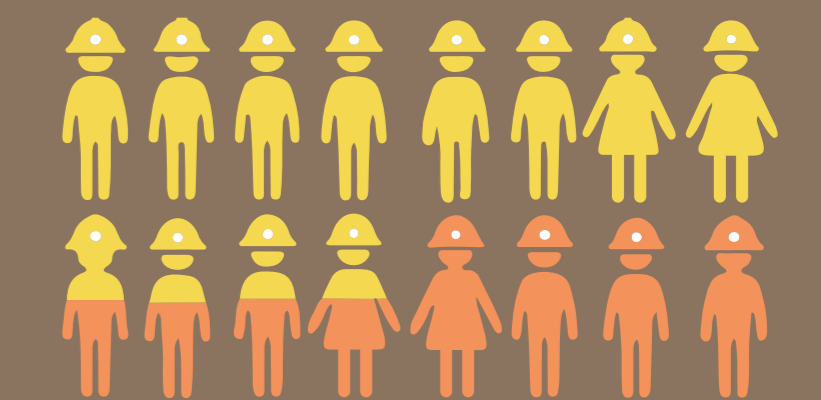


- According to official government data (2022), artisanal copper mining does not exist, and small-scale mining is only equivalent to 0.2% of national copper production.
- Artisanal copper production has been reported only in the years 2008 to 2010.



Artisanal copper mining is carried out mostly by the indigenous, Quechua-speaking population.

- 200,000 people are dedicated to ASM in Peru. Approx. 100,000 of them mine copper (50,000 combine gold and copper, and 50,000 mine purely copper).



The realization of this project was possible thanks to the ISEAL Innovations Fund grant, with the support of:

